

# HeatSeeker<sup>®</sup> Thermal Imagers

- n Blended thermal/digital image (0-100% & PIP)
- n Hottest/coldest temperature cursors instantly display on live screen
- n Sequence image recording activated by alarm settings
- n Class II laser
- n Built-in LED light
- n High and low temperature alarms
- n Save images with text and voice annotation™
- n Adjustable emissivity for maximum accuracy
- n Multi-lingual - nine languages included
- n Six-hour battery life
- n Tripod mountable
- n ThermalVision™ PC software included
- n Two-year warranty



Description	Cat. No.
HeatSeeker 160 Thermal Imager, Carrying Case, Power Supply, Removable-Rechargeable Battery, ThermalVision™ II PC Software and USB cable	<b>61-846</b>
HeatSeeker Thermal Imager, Removable Handle, Carrying Case, Power Supply, ThermalVision™ PC Software and USB Cable	<b>61-844</b>

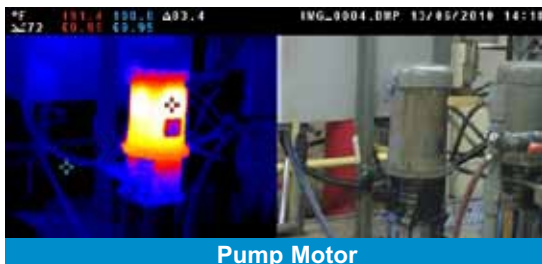
Accessories	61-846	61-844
<b>Includes</b>		
Removable Battery	<b>61-846BAT</b>	—
USB Cable	<b>61-844USB</b>	<b>61-844USB</b>
Camera Handle	—	<b>61-844HAN</b>
Carrying Case	<b>61-844CC</b>	<b>61-844CC</b>
Power Supply	<b>61-846PS</b>	<b>61-844PS</b>
ThermalVision™ Software	<b>61-846SW</b>	<b>61-844SW</b>
<b>Optional</b>		
Light Shade	<b>61-844LS</b>	<b>61-844LS</b>
Car Charger	<b>61-846CAR</b>	<b>61-844CAR</b>
Desktop Charger	<b>61-846DT</b>	—
Hard Transport Case	<b>61-846HC</b>	<b>61-846HC</b>



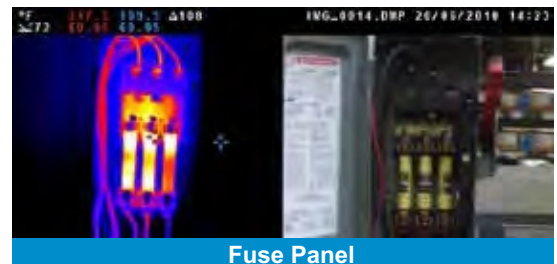
61-846

## HeatSeeker Thermal Imaging Camera Specifications

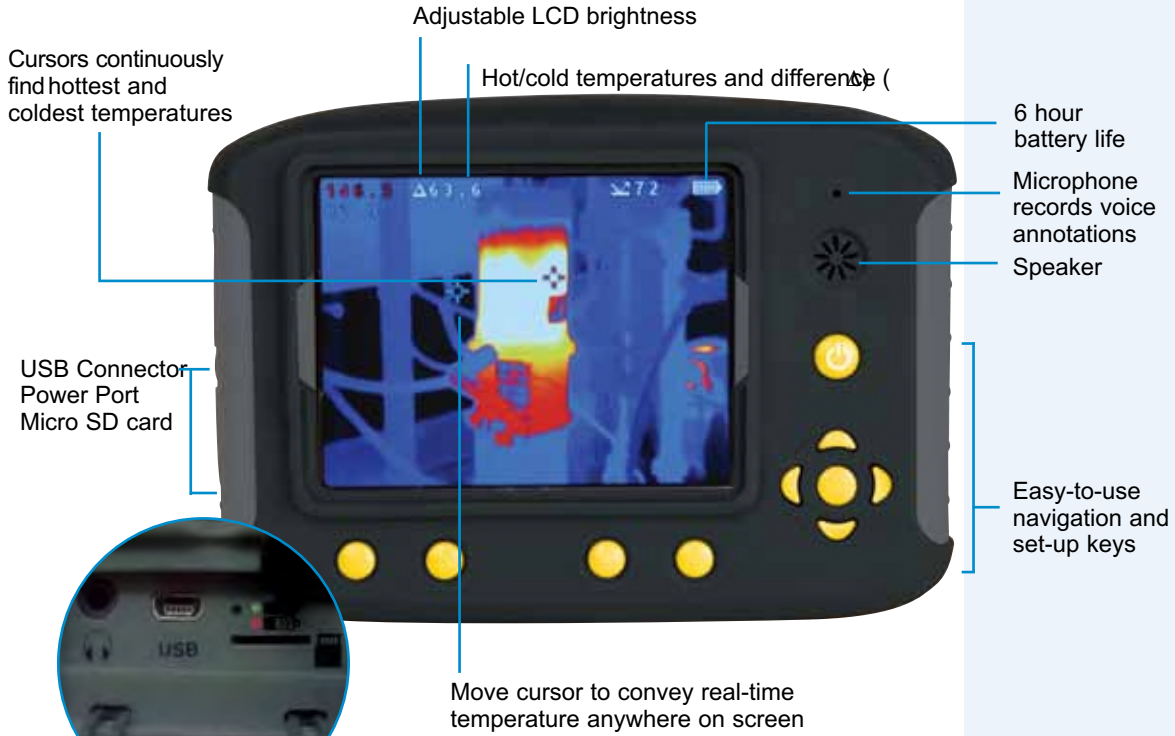
Feature	HeatSeeker (61-844)	HeatSeeker 160 (61-846)
Temperature Range	14°F to 662°F (-10°C to 350°C)	14°F to 482°F (-10°C to 250°C)
Temperature Accuracy	±2°C or ±2% of reading	
Emissivity Table	0.2 to 1.0 (adjustable)	
Cursors	Two-movable	Four-movable (with independent emissivity setting)
Image Storage (2 GB micro SD card)	2000 Images	
Field of View	20° x 20°	10° x 15°
Thermal Sensitivity	< 0.3°C at 30°C	< 0.08°C at 30°C
Focal Plane Array	2,209 pixels (47 x 47)	19,200 pixels (160 x 120)
Display	3.5" LCD	
Visible Light Camera Resolution	1.0 Megapixels	2.0 Megapixels
Spectral Range	8µm to 12µm	8µm to 14µm
Image Control	Eight color palettes (Ironbow, Rainbow, Isotherm, Hot Metal, High Contrast, Rainbow 16, Black Hot and White Hot)	
Focus	Manual	
Power	Internal rechargeable Li-ion battery	Field replaceable rechargeable Li-ion battery



Pump Motor



Fuse Panel



Side door allows quick access to headphone and USB connections, charging port and removable Micro SDcard

**ThermalVision™ PC Software Included**

Easy-to-use software allows image download to PC for analysis.

**Features**

- View, edit and analyze images
- Automatic report generating capabilities
- Disk also includes user manual



**HeatSeeker provides real-time analysis and is ideal for:**

**Electrical Safety**

- Identifies overloaded circuits, loose/corroded connections and failing breakers in electrical panels
- Identifies blown fuses, overloads, phase imbalance and harmonics problems
- Identifies hot spots from high resistance connections

**Energy Efficiency**

- Identifies inefficient heating and cooling transfer
- Identifies draft sources from missing insulation in rafters, walls/floors
- Identification of problem areas helps reduce heat gain/loss and carbon footprint

**Building Maintenance**

- Discovers sources of moisture in roofs and areas behind walls
- Checks air distribution for blockages in pipes, damaged duct work and insulation gaps
- Checks fluid distribution for stuck valves and burst pipes

**Preventive Maintenance**

- Identifies equipment efficiencies/inefficiencies
- After applications include motors, pumps, boilers, radiators, heaters, chillers and transformers



Visit Us